

Ahlers & Ogletree's New Year's Signature Estates Auction, Jan. 12-13 in Atlanta, will be packed with 1,144 quality lots

A 93-piece Royal Copenhagen porcelain dinner service for twelve and two figural watercolor paintings by the French painter Raoul Dufy are expected top lots.

ATLANTA, GA, UNITED STATES, January 7, 2019 /EINPresswire.com/ -- A 93-piece [Royal Copenhagen](#) porcelain dinner service for twelve in the Flora Danica pattern, two figural watercolor paintings by the renowned French painter [Raoul Dufy](#) (1877-1953), and a 38-carat aquamarine necklace from the collection of the late Lily Langtree are a few expected top lots in Ahlers & Ogletree's New Year's Signature Estates Auction slated for the weekend of January 12th and 13th, online and in the Atlanta gallery at 700 Miami Circle.

The Saturday-Sunday auction will be packed with 1,144 quality lots, mostly pulled from prominent local estates and collections. Included will be lovely period antiques, fine art by noted artists, silver, Asian arts, period furniture, fine estate jewelry and more.

Online bidding is provided by [LiveAuctioneers.com](#), [Invaluable.com](#), [HiBid.com](#) and [Bidsquare.com](#).

Start times will be 10 am Eastern both days. The Royal Copenhagen 93-piece porcelain dinner service for twelve in the Flora Danica pattern carries the catalog's highest pre-sale estimate, at \$50,000-\$70,000. Each piece is marked to the underside with the maker's mark and each piece has the hand-painted Latin name of the plant species that's depicted.

The untitled (Chevaux a Deauville) figural landscape by Raoul Dufy depicts onlookers at a horse race below a hillside town. The painting was rendered in watercolor and gouache on paper and is signed lower right. It's nicely housed in a 26 inch by 32 inch frame and is expected to bring \$20,000-\$40,000. Dufy was a Fauvist painter and brother of Jean Dufy.

The 14kt white gold handmade aquamarine and diamond pendant and chain set features a 38.27-carat medium-blue aquamarine surrounded by 53 one-carat tw diamonds on a 24-inch chain. An accompanying document describes the necklace as being "from the collection of the



14kt white gold aquamarine and diamond necklace set with a 38-carat aquamarine (est. \$25,000-\$35,000).

late Lily Langtree" (1853-1929, the British-American socialite-actress-producer), and it was "displayed at the Paris Exhibition of 1925" (est. \$25,000-\$35,000).

European furniture will feature a George II-style marble-top and gilt bronze library (or dining) table, made in the 20th century in the manner of William Kent, having a Greek key frieze centered with a mask on eight square tapered and fluted legs (est. \$15,000-\$20,000); and a rare set of eight Irish-made Queen Anne dining chairs (six from the early 18th century and two later models), appraised in 1987 for \$65,000 (est. \$15,000-\$20,000).

An unsigned, bust-length oil on canvas Portrait of a Lady by British painter [Sir Joshua Reynolds](#) (1723-1792), possibly of Lady Charlotte Johnston, housed in a 32 inch by 28 inch frame, is expected to realize \$15,000-\$25,000. Also, an oil on canvas genre scene by Ivan Trutnev (Russian, 1827-1912), depicting two workmen shooing away stray dogs, artist signed and unframed at 28 ¾ inches by 21 ¾ inches, should make \$7,000-\$9,000.

Wonderful original oil on canvas paintings by listed French artists will be plentiful and will include the following works:

- *Hiver a Pomponne* by Henri Lebasque (1865-1937), painted in 1906 and signed lower right, an Impressionistic landscape rendering depicting a view on a river in winter, with the canvas measuring about 23 ¾" by 28 ¾" (est. 20,000-\$40,000).
- *Blace de la Bastille*, by Edouard Cortes (1882-1969), signed lower left, depicting a Parisian street scene, 23" by 27 ¼" framed (est. \$10,000-\$20,000).
- *Seaside Landscape with Gardener* (1978) by Marcel Dyf (1899-1985), one of three works by Dyf in the auction, depicting an ocean shoreline with a woman gardening on a bank, signed and inscribed to verso with date/signature (est. \$4,000-\$6,000).
- *La Danseuse*, painted in the mid-20th century by Charles Levier (1920-2003), showing two female dancers and artist signed to lower right and to verso. Verso of canvas also has gallery label remnants specifying artist, title (est. \$1,500-\$3,000).

An American coin silver soup ladle by Thomas Phillips (1774-1843), with a period script "C" to the front of the handle and a design that suggests it was made during Phillips' first period in Paris, Ky. (1792-1818), 14 inches long, weighing 5.88 ozt, should bring \$10,000-\$15,000; and a 70-piece porcelain dinner service in the Audubon pattern by Limoges for Tiffany & Co., each piece with the maker and pattern marks to the underside, is expected to reach \$8,000-\$16,000.

A Ming Dynasty scroll after Qiu Ying (Chinese, circa 1494-1552), depicting a battle and titled



Royal Copenhagen 93-piece porcelain dinner service for twelve in the Flora Danica pattern (est. \$50,000-\$70,000).



Ming Dynasty scroll made from ink and pigment on silk, after Qiu Ying (Chinese, circa 1494-1552) (est. \$10,000-\$15,000).

Scene of Zixushanglin, made from ink and pigment on silk and likely crafted late Ming or early Qing, with several period seals, should finish at \$10,000-\$15,000; while a clear and frosted glass Margaret vase by Rene Lalique (French, 1860-1945), from a model introduced in 1929, about 9 inches tall and marked to the underside "R. Lalique France", is expected to make \$6,000-\$8,000.

Previews will be held Monday through Friday, January 7th-11th, from 10-5 daily. A preview party will be held on Thursday, January 10th, from 6-9 pm. Light refreshments will be served. Doors will open both auction days, Saturday and Sunday, January 12th and 13th, promptly at 9 am EDT.

Ahlers & Ogletree is a multi-faceted, family-owned business that spans the antiques, estate sale, wholesale, liquidation, auction and related industries. Ahlers & Ogletree is always seeking quality consignments for future auctions. To consign an item, an estate or a collection, you may call them at 404-869-2478; or, you can send them an e-mail, at consign@AandOauctions.com.

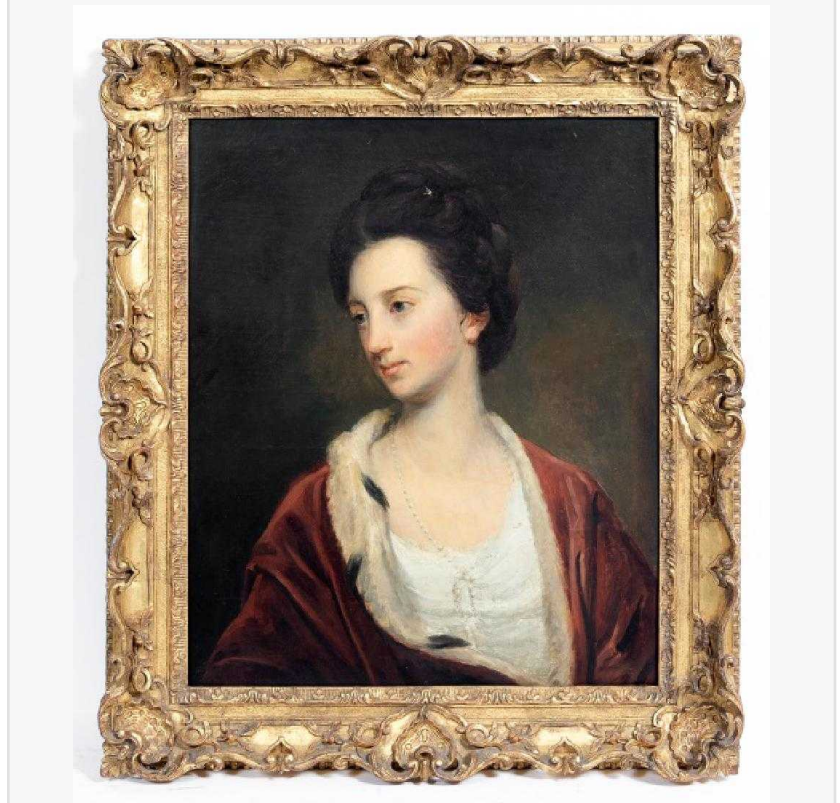
To learn more about Ahlers & Ogletree and the Signature Estates Auction planned for January 12th-13th in Atlanta, Ga., visit www.AandOauctions.com. Updates are posted frequently. You can also follow Ahlers & Ogletree via social media on Twitter, Instagram, Pinterest and Facebook.

#####

Elizabeth Rickenbaker
Ahlers & Ogletree Auction Gallery
+17708420212
[email us here](#)



Untitled figural landscape by Raoul Dufy (French, 1877-1953), one of two watercolors by Dufy in the sale (est. \$20,000-\$40,000).



Unsigned, bust-length oil on canvas Portrait of a Lady by Sir Joshua Reynolds (British, 1723-1792) (est. \$15,000-\$25,000).

This press release can be viewed online at: <http://www.einpresswire.com>

Disclaimer: If you have any questions regarding information in this press release please contact the company listed in the press release. Please do not contact EIN Presswire. We will be unable

to assist you with your inquiry. EIN Presswire disclaims any content contained in these releases.
© 1995-2019 IPD Group, Inc. All Right Reserved.