

# Dozens of artworks by French-trained American artist John Douglas Patrick (1863-1937) will be sold online January 15th

*Dozens of original artworks and other personal effects from the estate of John Douglas Patrick (1863-1937), who studied in France, will be sold online Jan. 15.*

KANSAS CITY, MO, UNITED STATES, December 15, 2017 /EINPresswire.com/ -- KANSAS CITY, Mo. – Dozens of original artworks and other personal effects from the estate of [John Douglas Patrick](#) (1863-1937), who studied in France and achieved worldwide acclaim by being one of the first Americans ever to be awarded a medal by the [Paris Salon](#) in 1889 for his seminal work [Brutality](#), will be sold in an online auction Monday, January 15th, at 7 pm Central.

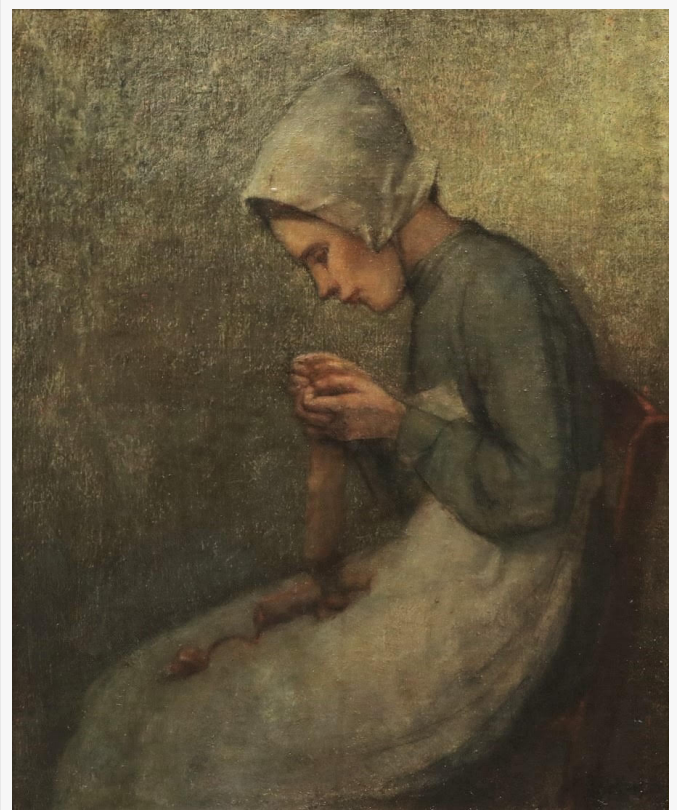
The auction is being conducted by KC Auction & Appraisal Company, based in Kansas City. The catalog is scheduled to be published and open for pre-bidding on New Year's Day, January 1st, at the website [www.kcauctioncompany.com](http://www.kcauctioncompany.com). There will be no live, phone or absentee (left) bidding. It's an absolute auction; everything sells to the highest bidder, regardless of final price.

“We expect this auction to generate tremendous interest, locally, nationally and internationally,” said Jason Roske, owner of KC Auction & Appraisal Company. “This is based solely on the quality of Mr. Patrick’s work and because of his worldwide appeal. We’ve already seen strong interest from institutions and collectors, and we anticipate keen interest from French galleries.”

“

We expect this auction to generate tremendous interest, locally, nationally and internationally, from institutions and collectors, and we anticipate keen interest from French galleries.”

*Jason Roske*



Peasant Knitting by John Douglas Patrick (Am., 1863-1937).

The auction will exclusively feature artworks by Patrick, plus other items from his estate. The balance of his body of work and personal effects will be sold over the course of several more auctions, folded into general fine art and antique auctions planned throughout 2018 by KC Auction & Appraisal Company. All 500-600 of his artworks have been stored away for decades.

The artworks in the January sale cover a wide range of styles. Patrick was a classically trained figural painter who also created wonderful plein air (outdoor) works depicting fields,

orchards, trees and other nature-related subjects. His drawings and portraits are mostly classical in nature.

Some of the canvases are studies for *Brutality*, a monumental work that was gifted to the Nelson-Atkins Museum of Art in Kansas City by the artist's descendants in the 1990s (*Brutality* is not for sale in the auction). Also up for bid will be gorgeous impressionistic landscape paintings.

The other items will include his personal trunk that he used when traveling back and forth to Paris; hundreds of pieces of correspondence (including letters from patrons, contracts from the Kansas City Art Institute, where Patrick taught for decades); brochures from various art shows that featured his work; his painting supplies box (with artist's palettes) and many other items.

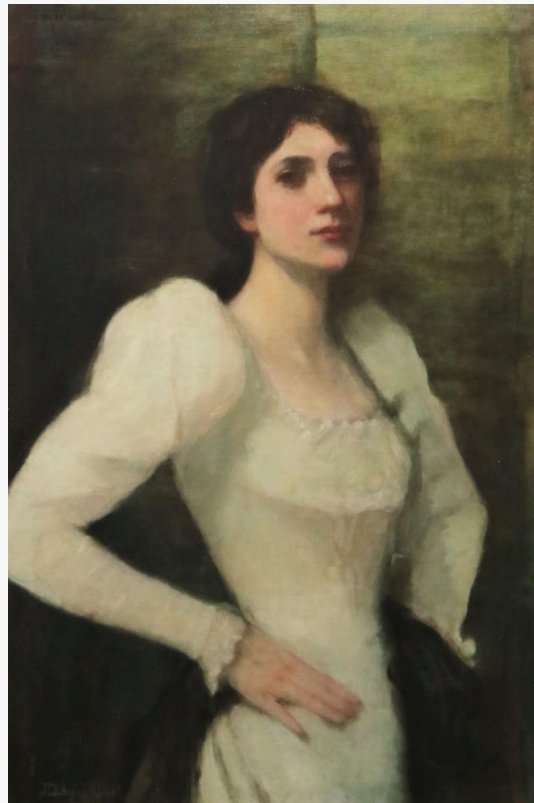
A biography of Patrick, written while he was still very much alive and involved in the creative process, in a brochure published by The Fine Arts Institute of Kansas City (scholastic year 1909-10), listed his achievements as such:

- Three times a medal winner during the first six months in the St. Louis School of Fine Arts, where he painted his first Salon picture.
- First and second prize during his first year in the Academie Julian of Paris, being the second American thusly honored.
- Second prize won in a competition with 120 others.
- An exhibitor in three successive Salons.
- His *Brutality* awarded the bronze medal, Universal Exhibition, Paris, 1889.

John Douglas Patrick was born to Scottish immigrants in Hopewell, Pa., but he moved with his family to a farm outside Lenexa, Kansas, near Kansas City, when he was still young. He showed a proficiency for drawing and painting early on and went on to attend the St. Louis School of Art for four years. Then he left in 1885, to study at the prestigious Academie Julian in Paris, France.



Cherry Blossom in Bloom by John Douglas Patrick (Am., 1863-1937).



Girl in White, painted in 1901 by John Douglas Patrick (Am., 1863-1937).



His talent was recognized by the faculty and he had paintings accepted for the Paris Salon, the annual exhibition, in the late 1880s. He made his mark with *Brutality*, an impressive, powerful work. Depicting a man abusing a horse to get it to do his bidding, the 11 foot 6 inch by 9 foot 6 inch oil on canvas is Patrick's statement that animals should be treated with dignity and respect.

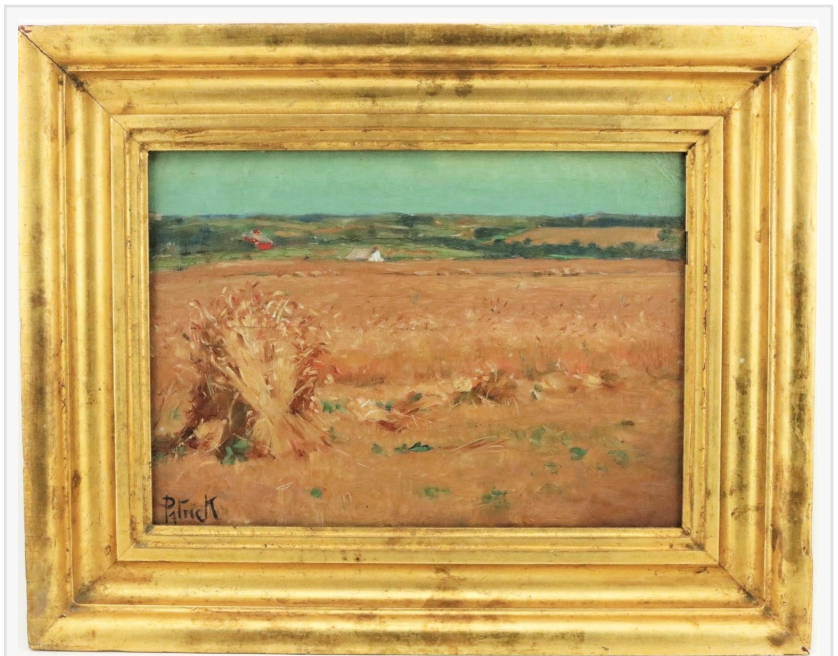
Patrick returned to the U.S. for family reasons in the 1890s and spent two years teaching art at a school he founded in St. Louis. During this period his reputation as a respected artist was further cemented when some of his work was featured in the Kansas pavilion at the 1894 World's Fair. In 1900, he returned to the Lenexa-Kansas City area and remained there for the rest of his life.

In 1907, Patrick was hired as one of the first teachers at the newly-formed Fine Arts Institute (later re-named the Kansas City Art Institute) in Kansas City. According to family lore, Patrick taught for free the first year, to help the school save money and attract enrollment. He was paid starting the following year until his retirement in 1936. The school held a retrospective of his work in December 1936; in January 1937, just one month later, Patrick passed away at age 74.

Because Patrick was always employed as an art professor, and earned additional income from portrait commissions, he rarely offered his personal works for sale. He cherished the very act of creation and considered his paintings to be a part of himself. He painted until the end of his life.

Upon his death, the task of inventorying and storing Patrick's estate fell to his family, which kept his artworks in one bedroom of a two-bedroom apartment. The next generation of heirs stored his paintings and drawings in a basement, where they've remained ever since, untouched, for years.

"We are honored and humbled to bring this historic and important collection to auction," Mr. Roske said. "Collectors are in for a treat when they realize the quality, quantity and breadth of Mr. Patrick's



Harvest by John Douglas Patrick (Am., 1863-1937), painted circa 1900.



Photo taken in 1912 by French-trained American artist John Douglas Patrick, signed and dated.

work. They'll have the opportunity to acquire pieces that were created in France and many places in the United States, including Lenexa, Kansas City, St. Louis and Tennessee."

Roske added, "The variety of works include quick sketches in graphite, completed drawings, studies for Brutality and other paintings, and many oil paintings. Some are spectacular works ready to hang in the home, gallery or museum. Others are in states best described as estate fresh. This is a rare chance to acquire items created by and used by this overlooked American Master."

A preview will be held the second week of January (dates and times to be announced), at the KC Auction & Appraisal Company gallery, located in the historic Quality Hill section of Kansas City, at 1070 Washington Street, by appointment only. For an appointment, call 816-283-3633.

KC Auction & Appraisal Company is always seeking quality items for future sales. To inquire about consigning a piece, a collection or an estate, you may call them at 816-283-3633; or, you can e-mail them at [info@kcauctioncompany.com](mailto:info@kcauctioncompany.com). The firm specializes in fine art, antiques and estate liquidations and has been recognized as the Best Auction House in Kansas City by readers of Pitch magazine three of the last four years.

For more information about KC Auction & Appraisal Company and the internet-only Part 1 auction of the estate of artist John Douglas Patrick, please visit [www.kcauctioncompany.com](http://www.kcauctioncompany.com).

# # # #

Jason Roske  
KC Auction & Appraisal Company  
(816) 283-3633  
[email us here](#)

---

This press release can be viewed online at: <http://www.einpresswire.com>

Disclaimer: If you have any questions regarding information in this press release please contact the company listed in the press release. Please do not contact EIN Presswire. We will be unable to assist you with your inquiry. EIN Presswire disclaims any content contained in these releases.

© 1995-2017 IPD Group, Inc. All Right Reserved.