

# Revolutionary New Treatment of Chronic Lower Extremity Ulcers with LINLINE's Er:YAG Laser Technology

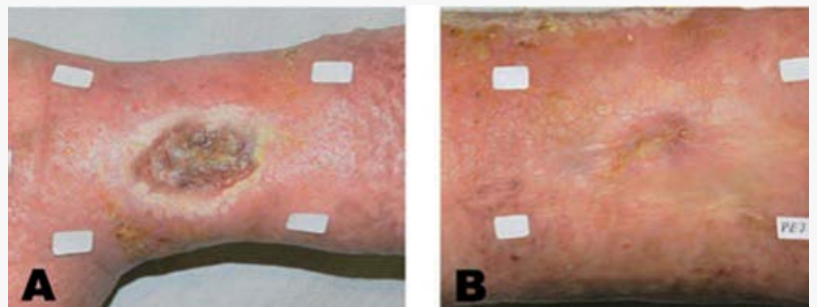
*Recently published study reveals effective and safe treatment alternative carried out by world renowned experts.*

LONDON, UNITED KINGDOM, October 10, 2017 /EINPresswire.com/ -- [Chronic lower extremity ulcers](#) (CLEU) are very common, have various causes and are difficult to heal. The objective of the prospective study was to analyse the response of CLEU to an [Er:YAG 2940 nm laser](#) equipped with unique [RecoSMA®](#) technology. Leading experts (1) in the field of laser medicine have now published their evidence in a respected international journal (2).

Evaluation of results achieved was carried out in 18 patients who signed up for the study. The gender distribution was as follows: 16 women and 2 men with an average age of 66. Patients were enrolled in the study by questionnaires, histologies and clinical visual correlation of progress by photographs taken before each session (16 sessions in total), which were then analysed with the help of computer software.

Results after 16 treatment sessions showed complete healing of ulcers or a decrease of their initial area by at least 50% in more than 50% of patients treated. The Student's t-test and Fisher's exact test were used for the statistical analysis.

LINLINE's RecoSMA® technology is unique and used to treat a variety of tissue conditions. It is based on a sophisticated laser optical system, converting the main laser beam into 10,000 microbeams per square cm, which simultaneously interact with the tissue. The powerful mechanical waves from every micro beam scatter from the surface to the deeper layers creating non-thermal partial damage of human cells up to 6 mm in depth. This new technology is unlike any other currently available - the tissue treated undergoes total regeneration, functional restoration, and the promotion of fast neovascularisation. The evidence of the effectiveness of the new RecoSMA® technology is



Before and After Treatment with Er:YAG and RecoSMA® Technology



The RecoSMA® system has several lenses that allow the laser beam to be divided into 10,000 microbeams/cm<sup>2</sup>, with each one of them retaining high power.

backed up by numerous pre-clinical and clinical studies for aged skin rejuvenation and lifting, correction of scars, treating trophic ulcers and many other applications.

This technology used on difficult CLEU offers an effective treatment alternative. This fast and safe treatment improves, relieves and closes a pathology which is difficult to resolve. Laser treatment is simple to carry out and there is no risk of morbidity, given that no complications were observed during the entire period of this study. To read the full article, follow this link;  
[https://www.jstage.jst.go.jp/article/islsm/26/3/26\\_17-OR-17/article](https://www.jstage.jst.go.jp/article/islsm/26/3/26_17-OR-17/article)

SOURCE: LINLINE Medical Systems SAS

RecoSMA® - Time Back Trigger - #RecoSMA

LINLINE Medical Systems

Founded in 1994 as a research company, LINLINE (<http://www.linline.com>) is an international manufacturer of high quality medical laser devices for aesthetic, dermatological and surgical purposes.

(1) Alcolea JM, Hernández E, Martínez-Carpio PA, Vélez M, Khomchenko V, Sola A , Trelles MA  
(2)[https://www.jstage.jst.go.jp/article/islsm/26/3/26\\_17-OR-17/article](https://www.jstage.jst.go.jp/article/islsm/26/3/26_17-OR-17/article)

Richie Hunt  
LINLINE Medical Systems  
+44 774 732 6762  
email us here

---

This press release can be viewed online at: <http://www.einpresswire.com>

Disclaimer: If you have any questions regarding information in this press release please contact the company listed in the press release. Please do not contact EIN Presswire. We will be unable to assist you with your inquiry. EIN Presswire disclaims any content contained in these releases.

© 1995-2017 IPD Group, Inc. All Right Reserved.